

LIFELONG LEARNER PROFILE



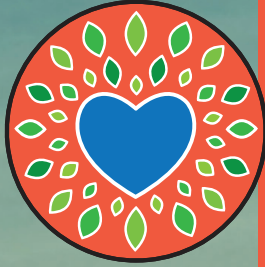
MINDFUL LEARNER

I am a curious learner who is committed to being present and mindful of how I use my time.

I am developing my talents and believe in my ability to grow.

I set personal and academic goals, reflecting and adjusting as needed.

I evaluate information, taking into account existing evidence using a variety of strategies.



COMPASSIONATE CITIZEN

I use self-control to make personal decisions and take responsible actions.

I recognize and respect differences, acting with empathy and compassion by getting along with and standing up for others.

I value other cultures and understand the importance of kind and caring communities.

I follow The Cardiff Way.



SKILLFUL CONNECTOR

I am an active listener who speaks up on behalf of others to foster a sense of community.

I am an inquisitive learner who seeks to build and find connections.

I am empathetic and consider a diverse group of perspectives.

I help create a culture of belonging by reflecting on the input of others.



GLOBAL THINKER

I am one part of a big world.

I respect the experiences of others, cultural practices, places throughout the world, and want to learn more about them.

I make decisions that benefit myself as well as other people, our community, and the environment.

I use my strengths to ask questions with confidence and learn about a variety of pathways to make a positive impact on future generations.



INSPIRED INNOVATOR

I am a flexible and resourceful thinker.

I persevere through obstacles, learning and growing through self reflection.

I contribute creative ideas and solutions and am energized by new learning.

I use technology responsibly and understand the impact of my digital footprint and online presence.

